

Daughter : Replica

DR: YR 1910: MOD 1

A thesis film by: Julissa Scopino

One self dies...



Another is born.



































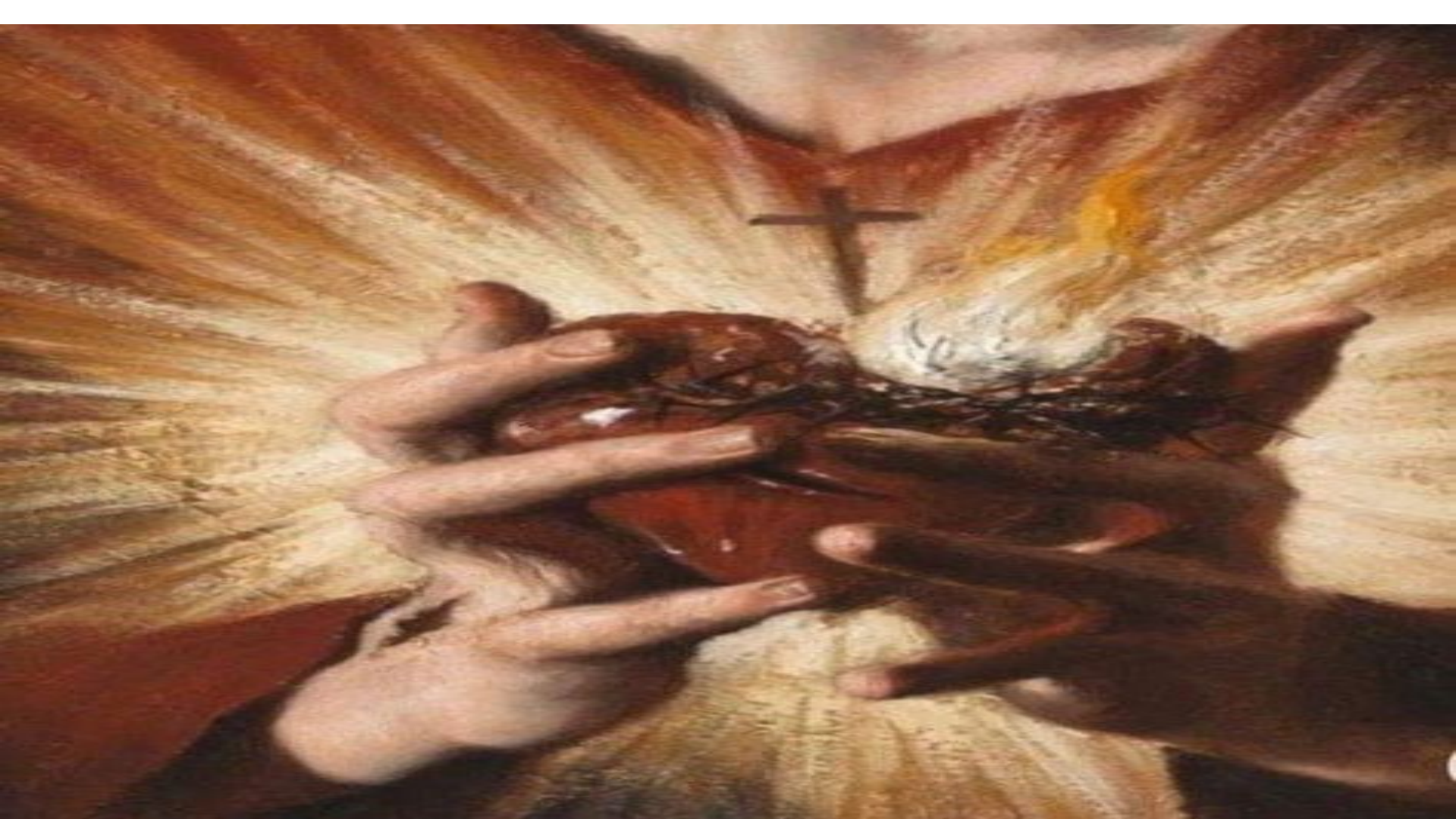


LR











A tale about being replaced...



A sickly girl battles to maintain her mother's love as her new robot doll begins to assimilate her personality.

GENRE:

Drama w/ elements of fantasy



THEME: love and sacrifice



A close-up, dimly lit photograph of a woman with dark hair embracing a man from behind. The woman is looking towards the camera with a slight smile, while the man has his eyes closed and a somber expression. The lighting is dramatic, highlighting their faces against a dark background.

Film Spine:

Loving yourself when others don't can be a lonely place



Throughline:

No matter how broken or incomplete we are or feel, we are not replaceable.

A photograph of three young women in a room decorated for a party. The woman on the right is wearing a white, short-sleeved, floor-length dress with a gold belt and a tiara, and she has her right arm raised. The woman in the middle is wearing a dark, long-sleeved dress with a red and white patterned bodice. The woman on the left is wearing a dark, long-sleeved dress. The room is decorated with yellow star garlands, white curtains, and a patterned rug. There are also some lit candles or lanterns in the foreground. The overall atmosphere is warm and festive.

CHARACTERS



Solen (Protagonist)

- 10 years old
- Sickly yet willful
- Solen discovers is she being replaced by her new robot doll at the demand of her mother.

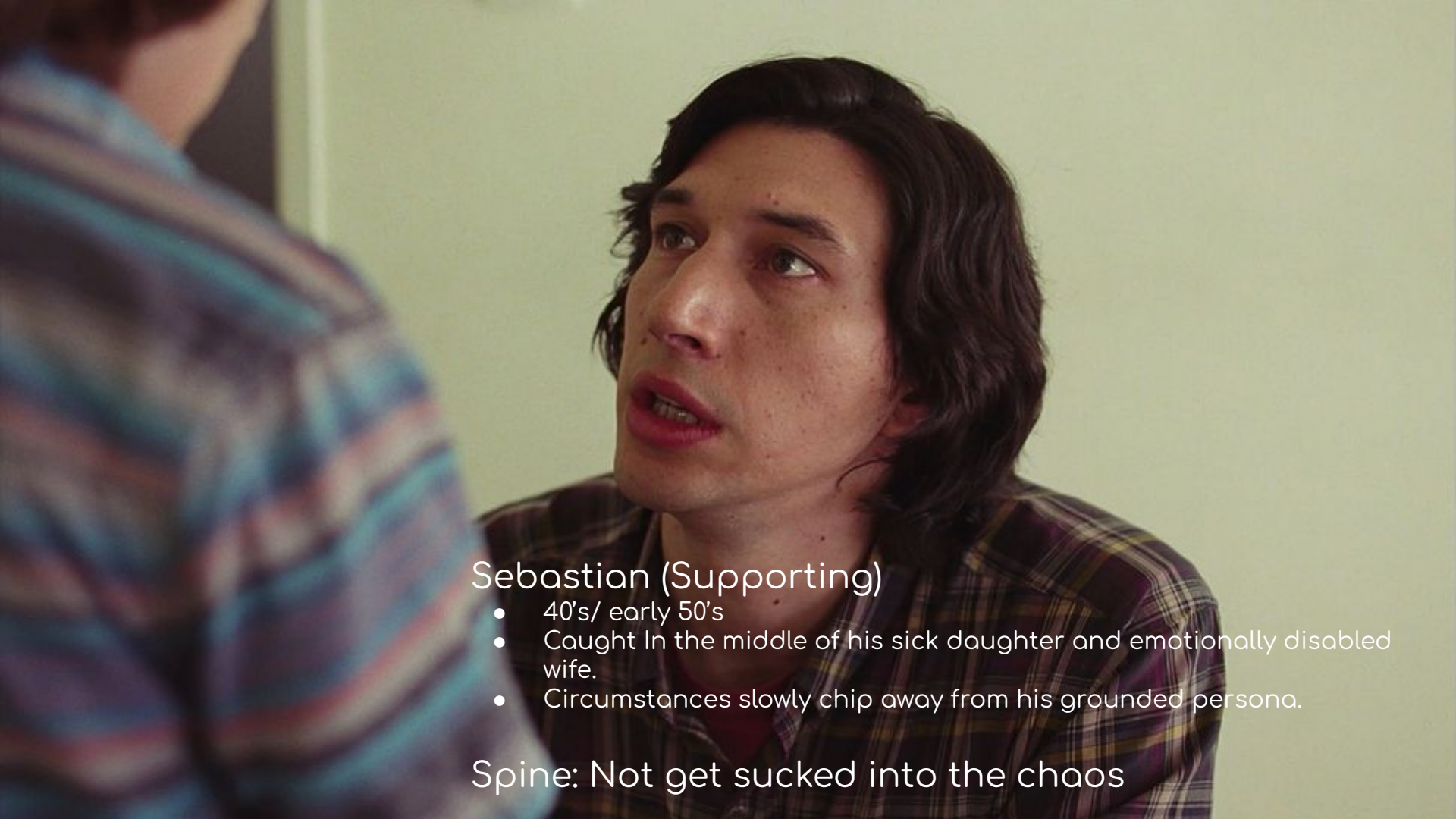
Spine: Fights to hold onto her mother's love

Daniella (Antagonist)

- 40's
- In early stages of grievance and slowly losing touch with reality
- She fights her anguish by purchasing a robotic doll to model her daughter's behaviors.

Spine: Can't face reality





Sebastian (Supporting)

- 40's/ early 50's
- Caught In the middle of his sick daughter and emotionally disabled wife.
- Circumstances slowly chip away from his grounded persona.

Spine: Not get sucked into the chaos



Jordan

- 10 years old
- Must carry out Mother's orders

Spine: to become Solen



What makes us human?

EMOTIONS

"We are not necessarily thinking machines."

"We are feeling machines that think."



Protagonist Emotional Journey

Dependent Love ~ Comparison ~ Jealousy ~ Betrayal ~ Anger ~ Surrender ~ Self Love

The Making of this film

LOCATION:
Alder Manor
Yonkers, NY
(Exterior)



LOCATION:
Harlem Mansion
NY, NY
(Interior)



INTERIOR LIGHTING STYLE:

- Darker colors where things aren't always in clear sight
- Shallow depth of field
- Unbalanced Weight / Shadows/ Hard Light
- Dark walls that absorb light



EXTERIOR LIGHT:

- Colors representing change (Autumn season)
- Deep Focus/ everything is visible
- Natural light / available light



LENSES

Spherical lens



Solen's Composition

Beginning shot: trapped in foyer



Ending shot: free in the world



Circular shapes grow as her self-belief grows



Protagonist (Solen) Inspiration

Family



Loneliness



Discovery / Betrayal



Daniella's Composition

Beginning shot: strong posture/ standing tall



Ending shot: hunched down posture/ anguished

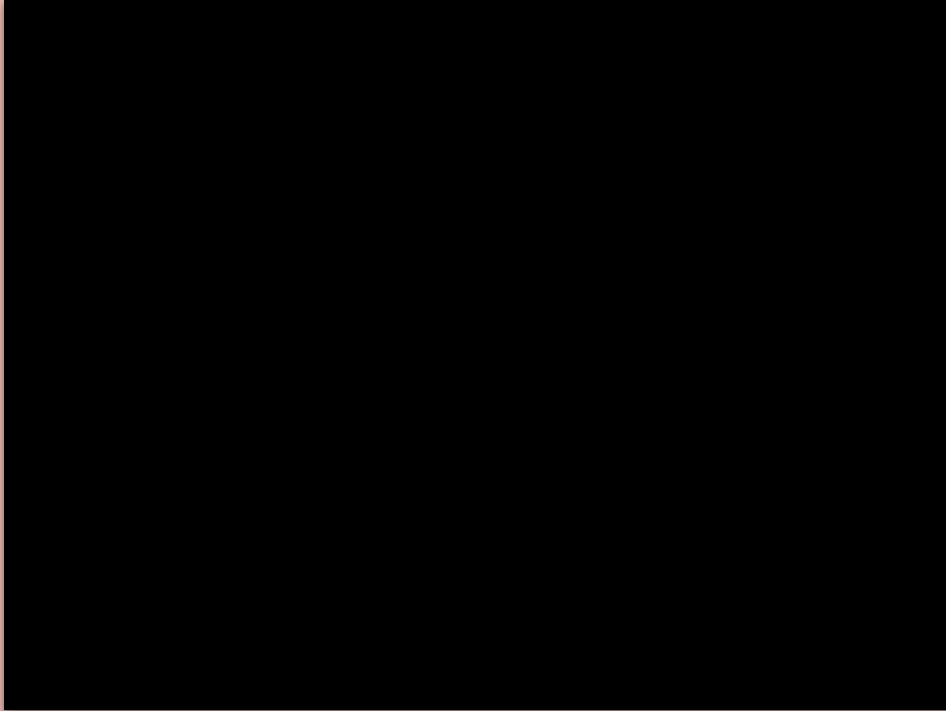


Triangles to demonstrate her imbalance (blocking, light, props, setting)



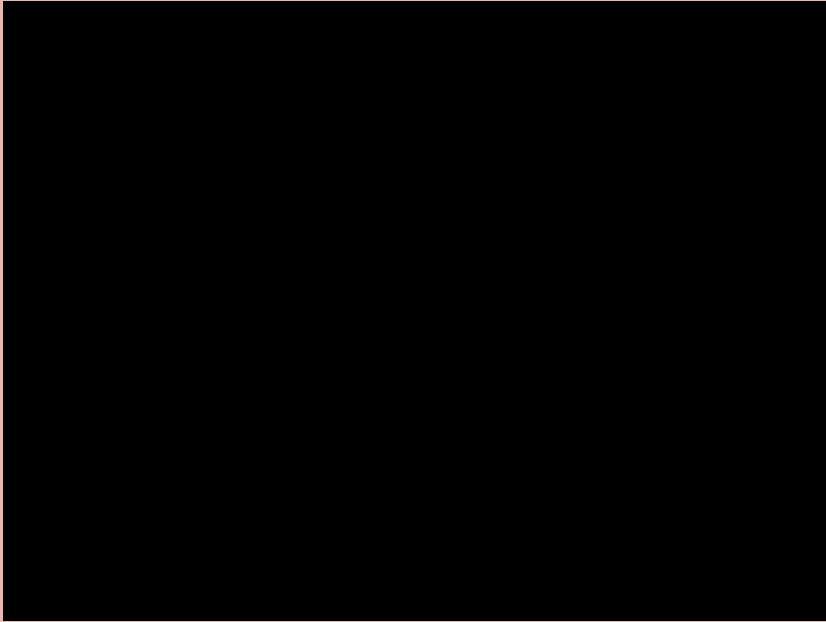
Camera:

- Extreme wides to extreme CU's
- STIX/ Classic look/ Dolly (no handheld - clean & precise images)



Camera w/ both girls:

Dutch Angles static & Dutch movement



Opening Shot/ Aged Room



Robotic Heart: Sound comparable

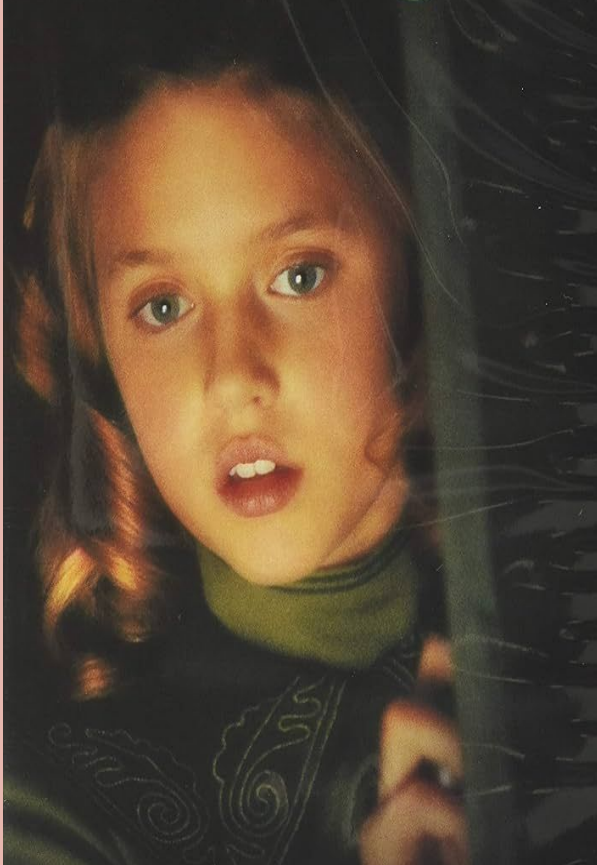


~Victorian~

Retro-Futurism

Steam punk

A LITTLE PRINCESS

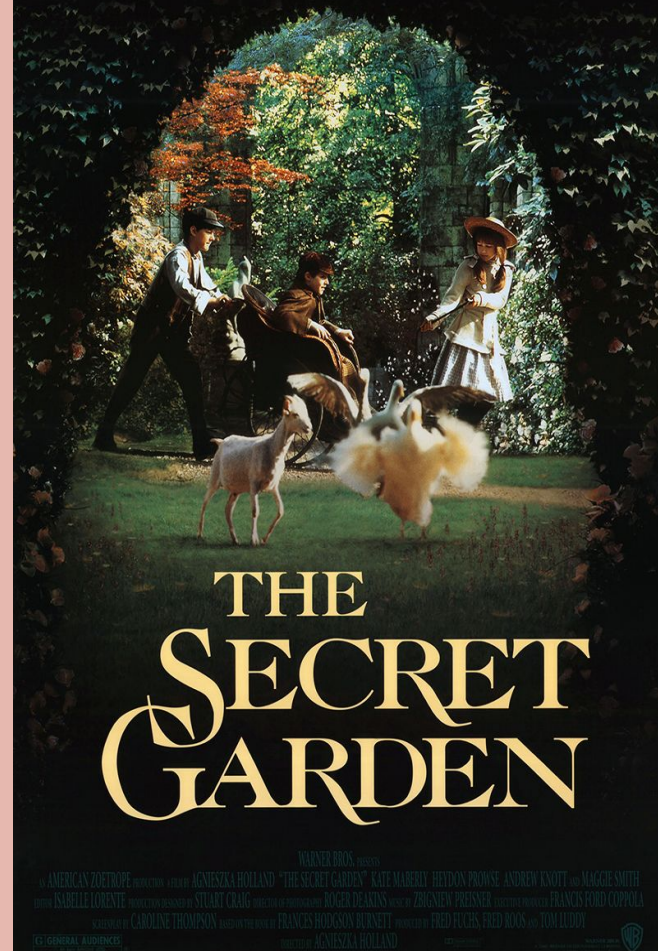


FROM THE AUTHOR OF "THE SECRET GARDEN"

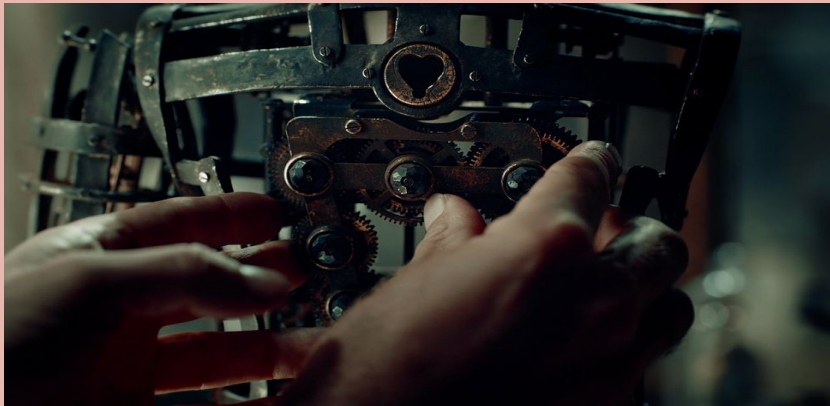
FILM COMPARABLES



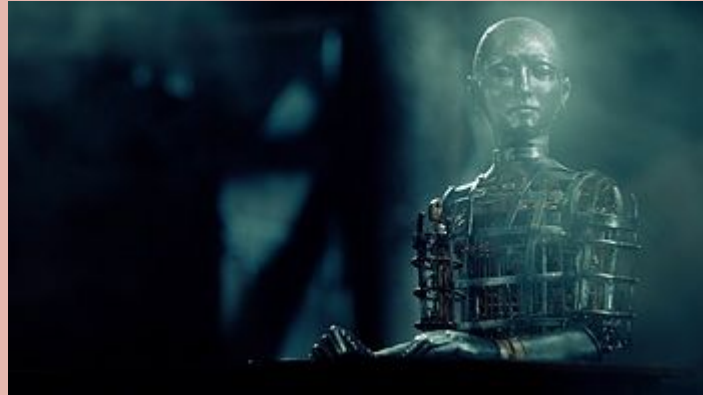
The timeless tale of a special place where magic, hope and love grow.



VFX
Human skin surrounding pit



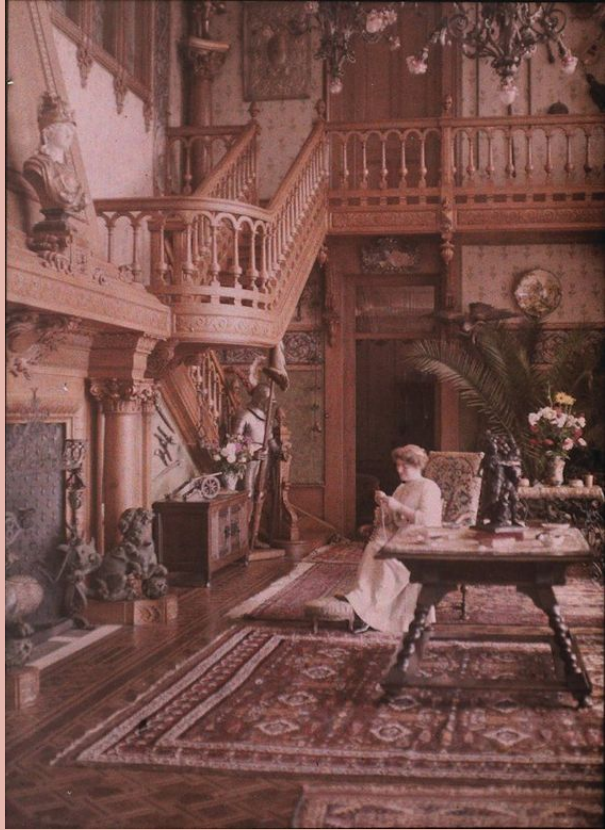
SINGLES OF JORDAN



Production Design Interior Duran Estate



Production Design Interior Vibe



Production Design Solen's Bedroom



Production Design Props



WARDROBE

Solen

Muted hues/ dark tones/ plain



WARDROBE

Solen

Let's get our sweet girl a hat



Hair / Makeup

Solen



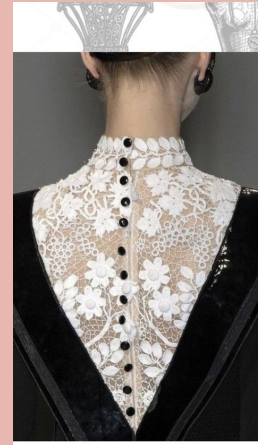
1900's visual references
SOLEN



1900's visual references
SOLEN



WARDROBE Daniella



WARDROBE

Daniella

*Solen/ Daniella start with a small collar which symbolizes an equal love for each other. As Daniella's love changes, so does the monstrous growing collar.



Hair References Daniella



1900's visual references
Daniella



1900's visual references
Daniella



WARDROBE

Jordan
Pinks/ Ruffles/ Lace



Hair References Jordan



WARDROBE

Sebastian



1900's illness/medical condition/sickly girls
Visual references











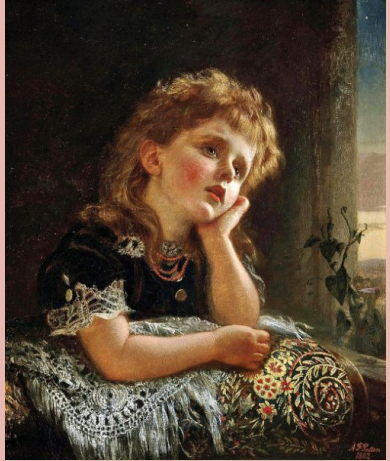


Solen's vibe







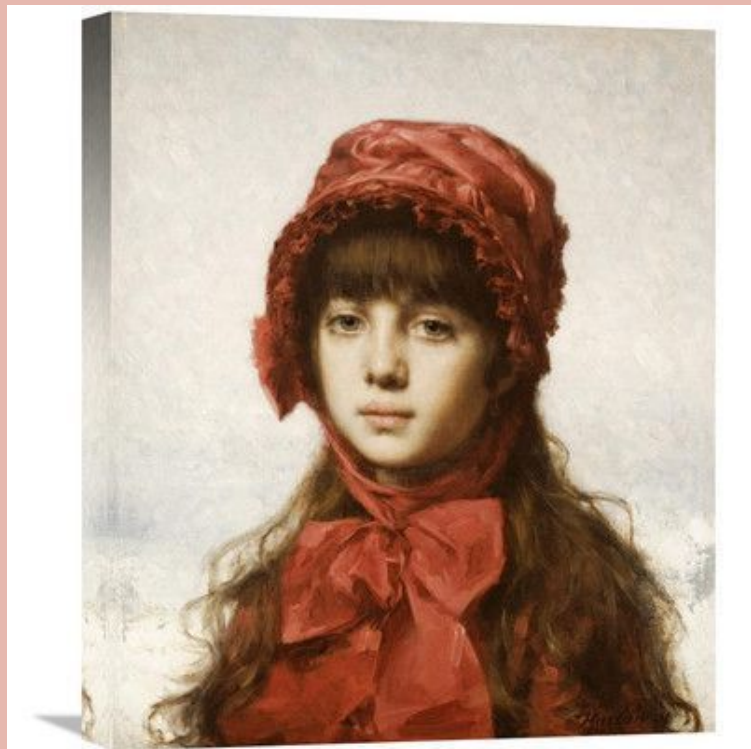
























Dear, Mommy

And I'd choose you;
in a hundred lifetimes,
in a hundred worlds,
in any version of reality,
I'd find you and
I'd choose you.

-THE CHAOS OF STARS



From: Solen

Thank you!!!!